

OLIVERS TOWN



TO LET

Crayford Road, Tufnell Park, N7

£650PW
£2PCM



BEDROOMS

4



RECEPTION

1



BATHROOM

1

OLIVERS TOWN



A stunning four double bedroom maisonette wonderfully located on a quiet tree lined street, equidistant from Tufnell Park, the various bus links on Camden Road and both Caledonian Road and Holloway Underground stations. Recently refurbished throughout, the accommodation comprises bright and spacious reception room, modern fitted kitchen, four good sized double bedrooms and modern shower room. Crayford Road is perfectly located for the various shops, bars and restaurants found at Tufnell Park and on Holloway Road. The nearest transport links can be found at Holloway Road (Piccadilly Line) and Tufnell Park (Northern line).

REF. 506

OLIVERS TOWN

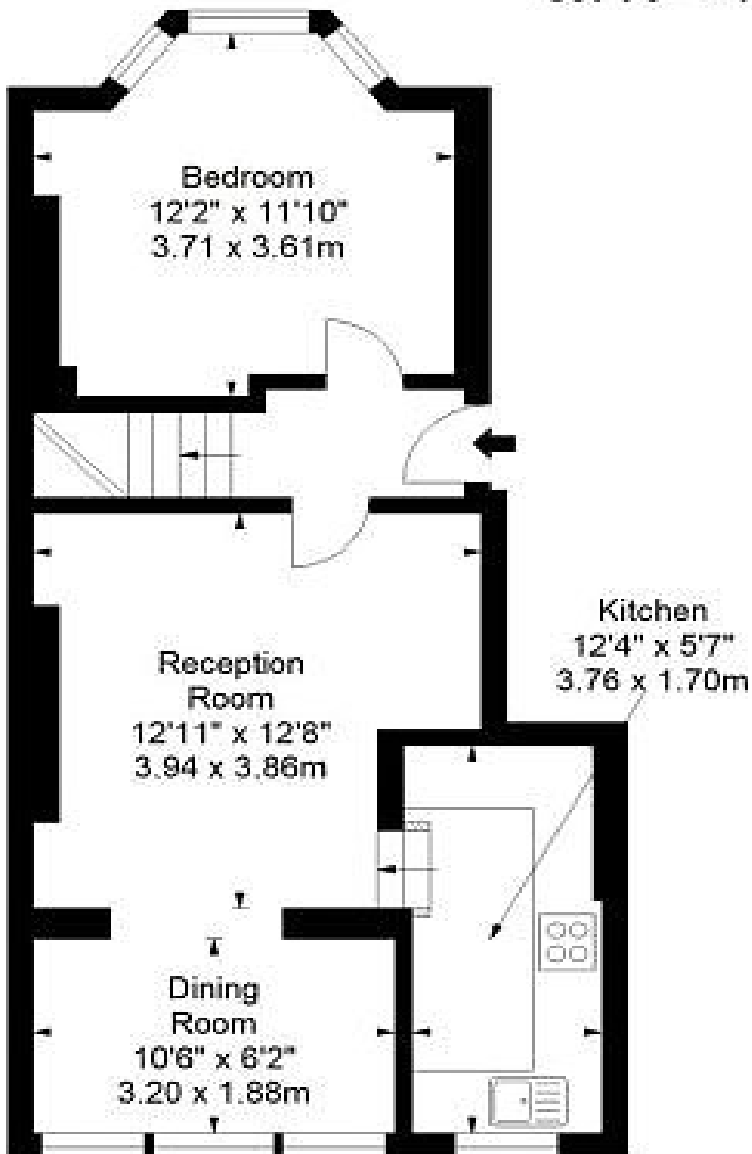
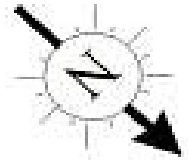


OLIVERS TOWN

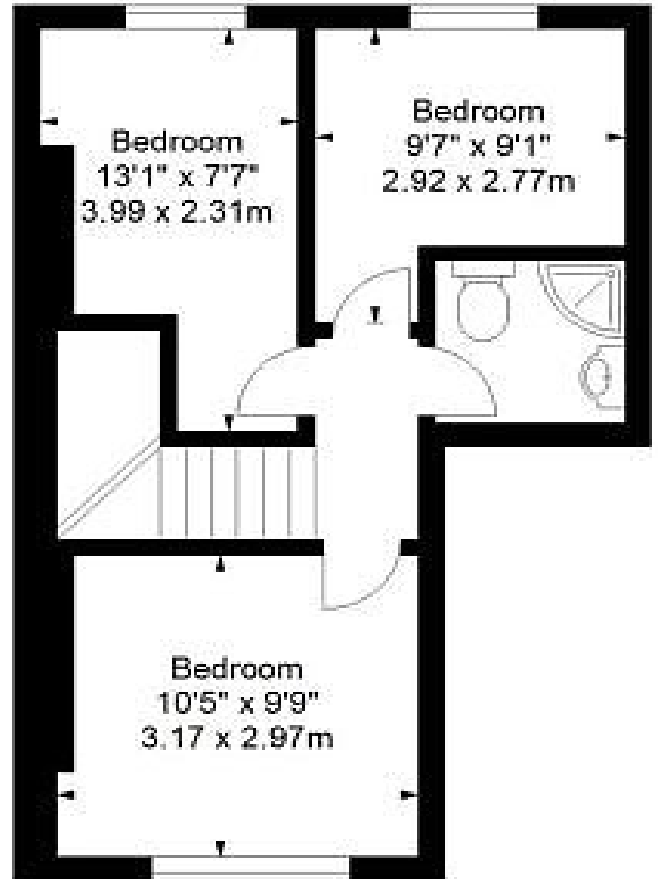


OLIVERS TOWN

Crayford Road, N7
Approx. Gross Internal Area *
837 Ft² - 77.76 M²



Raised Ground Floor



First Floor

Every attempt has been made to ensure the accuracy of this floor plan however, measurements are approximate and for illustration purposes only. Measured in accordance with the RICS code of measuring practice. Not to scale

© Inside Photography Ltd.

Tel 07850 620 122 , 0207 263 2188

www.ipinteriors.co.uk

OLIVERS TOWN



Energy Efficiency Rating		Current	Potential
Very energy efficient - lower running costs			
(92-100) A			
(81-91) B			
(69-80) C		73	76
(55-68) D			
(39-54) E			
(21-38) F			
(1-20) G			
Not energy efficient - higher running costs			
England, Scotland & Wales	EU Directive 2002/91/EC		

The energy efficiency rating is a measure of the overall efficiency of a home. The higher the rating the more energy efficient the home is and the lower the fuel bills will be.

Environmental Impact (CO ₂) Rating		Current	Potential
Very environmentally friendly - lower CO ₂ emissions			
(92-100) A			
(81-91) B			
(69-80) C			
(55-68) D			
(39-54) E			
(21-38) F			
(1-20) G			
Not environmentally friendly - higher CO ₂ emissions			
England, Scotland & Wales	EU Directive 2002/91/EC		

The environmental impact rating is a measure of a home's impact on the environment in terms of carbon dioxide (CO₂) emissions. The higher the rating the less impact it has on the environment.

