

OLIVERS TOWN



LET

Constable House, Adelaide Road, NW3

£430PW
£1PCM



BEDROOMS

2



RECEPTION

1



BATHROOM

1

OLIVERS TOWN



A brilliantly located two double bedroom apartment found in this prominent position nearby Chalk Farm station. This property enjoys a ground floor position which adds the benefit of a patio area, both double rooms have good light and ample storage. The separate kitchen is fully integrated and the reception/ dining room is ideal for entertaining. Offered fully furnished. Moments from the attractions of Primrose Hill and Regents Park Road.

REF. 54641

OLIVERS TOWN



OLIVERS TOWN



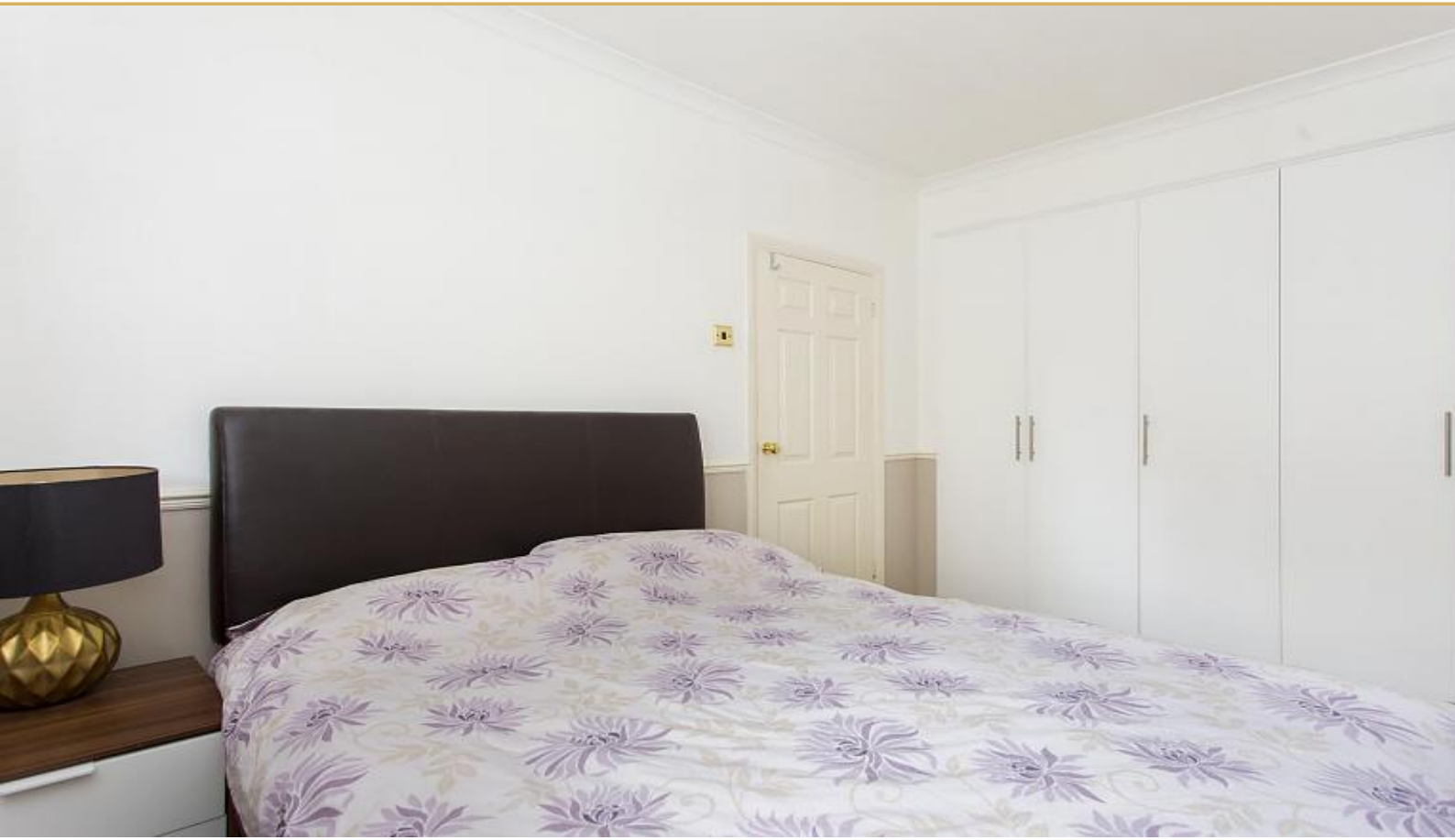
OLIVERS TOWN



OLIVERS TOWN



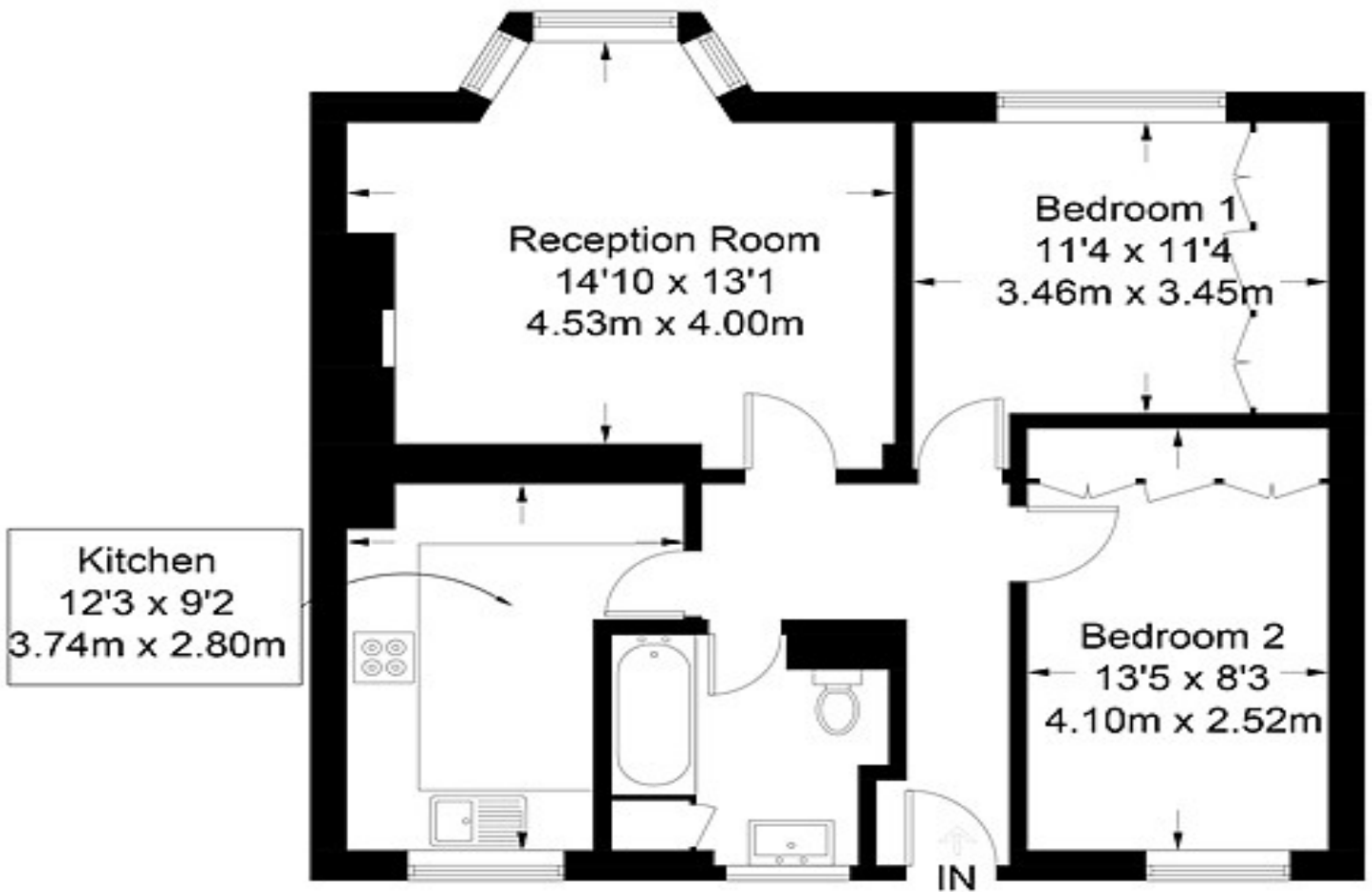
OLIVERS TOWN



OLIVERS TOWN

Constable House

Approximate Gross Internal Area = 654 sq ft / 60.8 sq m



Ground Floor

Illustration for identification purposes only, measurements are approximate, not to scale. (ID295009)

OLIVERS TOWN

