

OLIVERS TOWN



LET

Dartmouth Park Road, Dartmouth Park NW5

£360PW
£1PCM



BEDROOM

1



RECEPTION

1



BATHROOM

1

OLIVERS TOWN



Enviably located on one of Dartmouth Park's most prestigious residential turnings and just moments from Hampstead Heath, a spacious one double bedroom apartment arranged over the first floor of this beautiful Victorian property. The accommodation comprises a large open plan reception room with fitted kitchen, double bedroom to the rear which overlooks beautiful gardens and three piece bathroom suite. The property benefits from original features throughout including high ceilings, sash windows and wooden flooring. The property is ideally placed to take full advantage of not only the open acres of Hampstead Heath, but also local shops, restaurants, cafes and bars of Dartmouth Park and Swains Lane. The excellent transport connections available are from both Kentish Town (Northern Line) and Gospel Oak (mainline) which are also close at hand.

REF. 49807

OLIVERS TOWN



OLIVERS TOWN

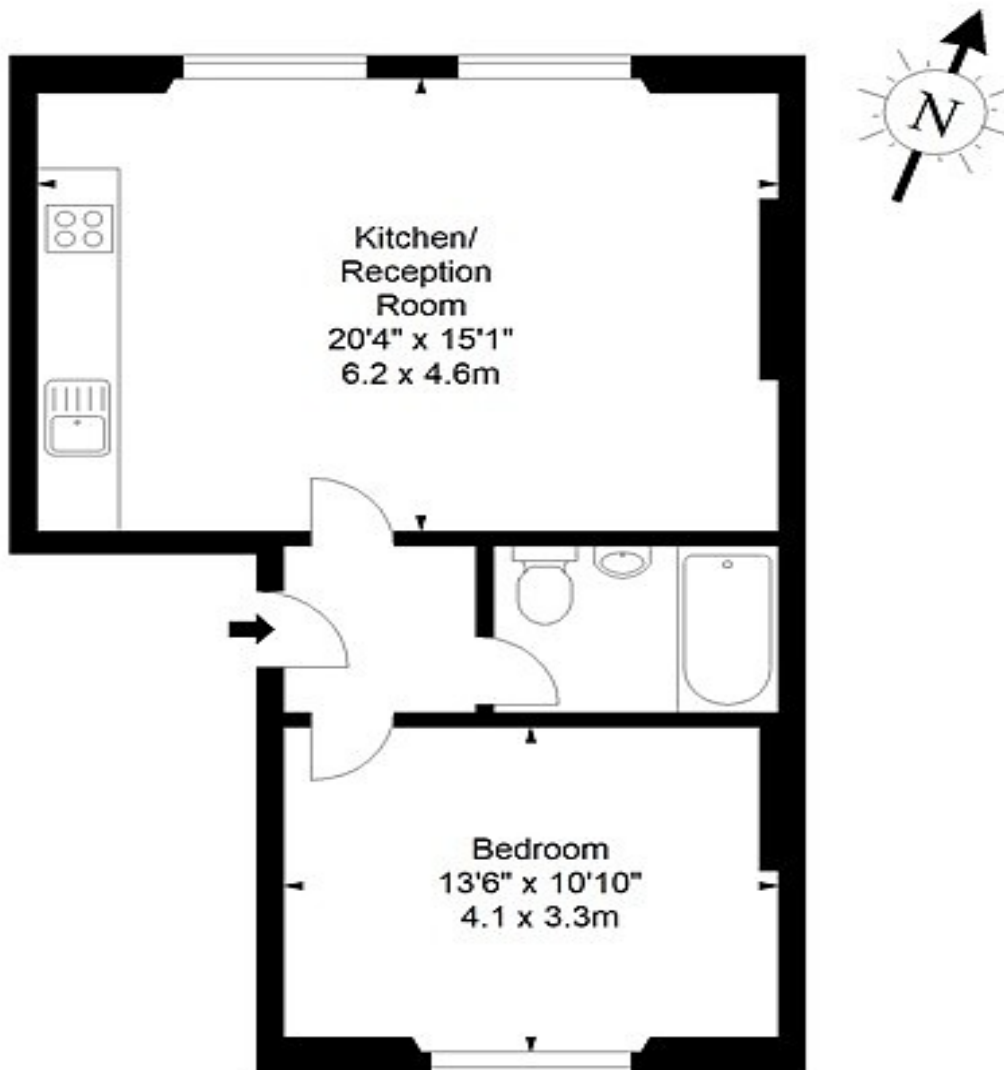


OLIVERS TOWN

Dartmouth Park Road, NW5

Approx. Gross Internal Area *

529 Ft² - 49.14 M²



First Floor

Every attempt has been made to ensure the accuracy of this floor plan however, measurements are approximate and for illustration purposes only. Measured in accordance with the RICS code of measuring practice. Not to scale

© Inside Photography Ltd.

Tel 07850 620 122 , 0207 263 2188

www.ipinteriors.co.uk

OLIVERS TOWN



