

# OLIVERS TOWN



LET

**Crowndale Road, Camden, NW1**

**£695PW**  
£3PCM



BEDROOMS

**3**



RECEPTION

**1**



BATHROOM

**1**



GARDEN  
BALCONY

# OLIVERS TOWN



A spacious three/four bedroom maisonette arranged over the upper two floors of a secure purpose built development situated only moments from Mornington Crescent underground station. The well-proportioned accommodation comprises three double bedrooms, reception room which is currently being used as a fourth bedroom, separate large eat-in kitchen, family bathroom, private south facing balcony and an abundance of storage. Ideally located a stone's throw from Mornington Crescent underground station as well as being just a short walk from Camden Town High Street, Euston and Central London with all the many wonderful amenities the desirable area has to offer.

**REF. 48699**

# OLIVERS TOWN





# OLIVERS TOWN



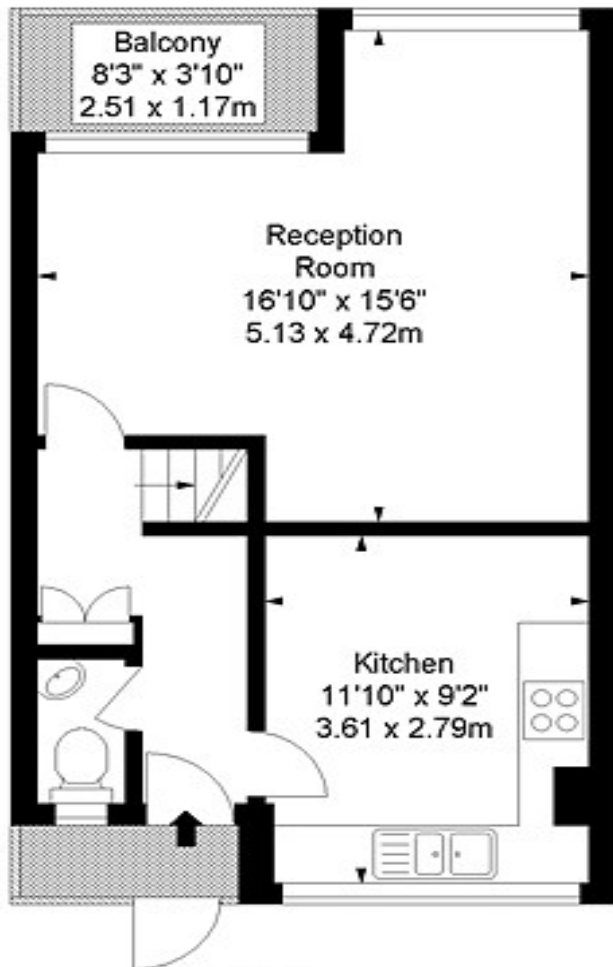
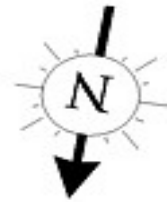


# OLIVERS TOWN

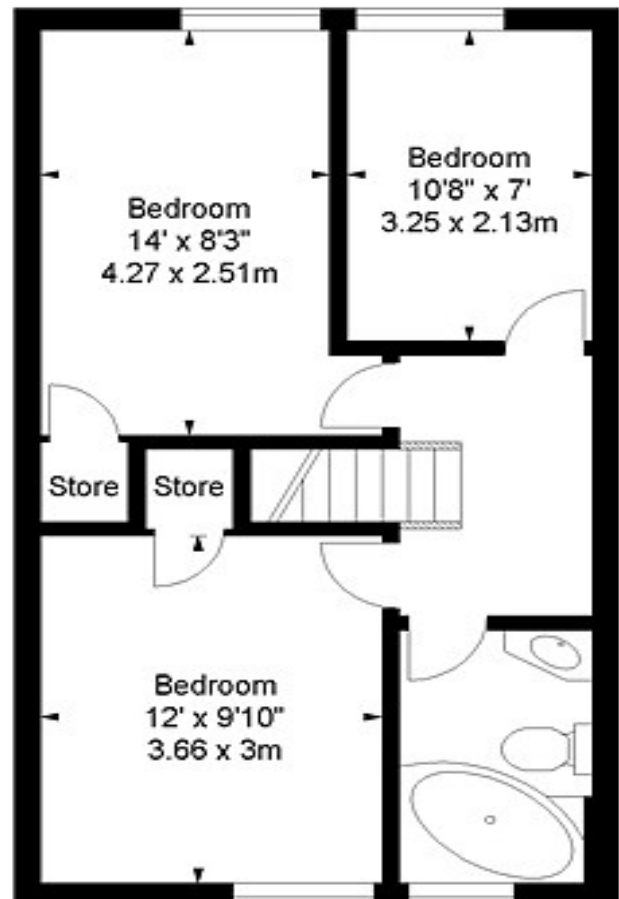


# OLIVERS TOWN

**Crowndale Road, NW1**  
**Approx. Gross Internal Area \***  
**874 Ft<sup>2</sup> - 81.19 M<sup>2</sup>**



**Third Floor**



**Fourth Floor**

Every attempt has been made to ensure the accuracy of this floor plan however, measurements are approximate and for illustration purposes only. Measured in accordance with the RICS code of measuring practice. Not to scale

© Inside Photography Ltd.

Tel 07850 620 122 , 0207 263 2188

[www.ipinteriors.co.uk](http://www.ipinteriors.co.uk)

# OLIVERS TOWN



