

OLIVERS TOWN



LET

Maitland Park Road, Chalk Farm NW3

£550PW
£2PCM



BEDROOMS

3



RECEPTION

1



BATHROOM

1



GARDEN

OLIVERS TOWN



A spacious three bedroom garden maisonette set within this modern, low-rise purpose built block. The generously proportioned accommodation (circa 855 square feet/79.4 square meters) comprises a reception room with direct access to a sunny garden, separate kitchen, three bedrooms and a bathroom with separate WC. The property is located on the corner of Grafton Terrace and Maitland Park Road, ideally placed for the amenities of Chalk Farm, Belsize Park and Kentish Town. The nearest underground station is Chalk Farm (Northern Line- 0.4 miles).

REF. 47124

OLIVERS TOWN



OLIVERS TOWN

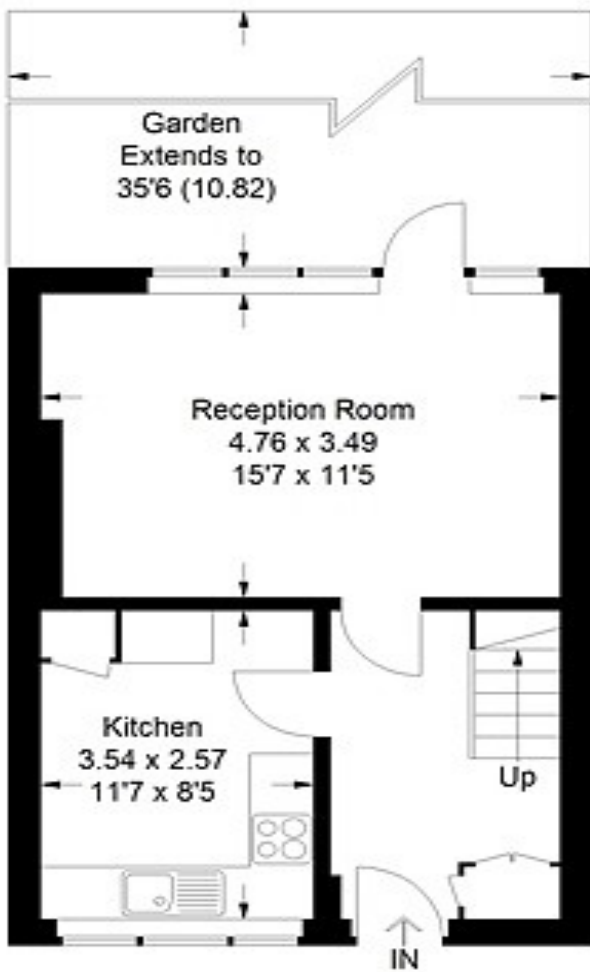


OLIVERS TOWN

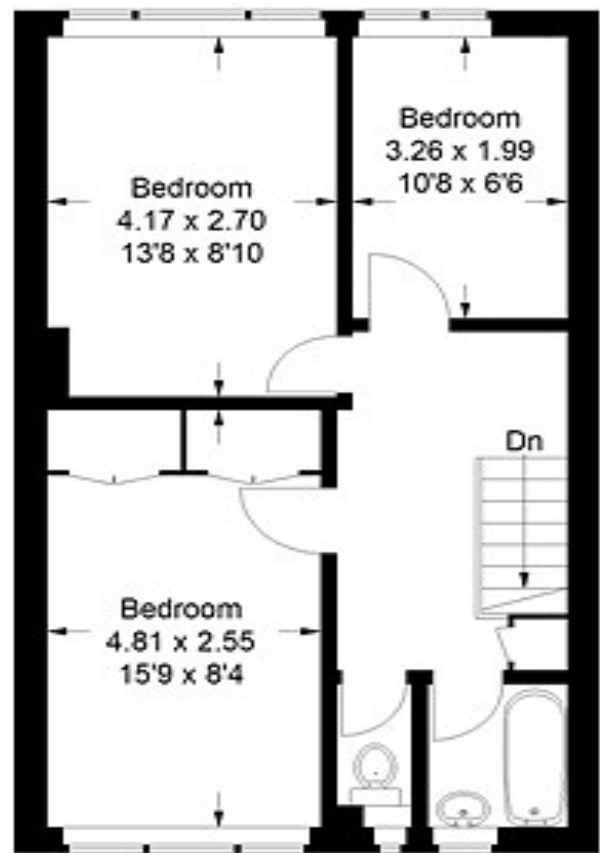


OLIVERS TOWN

Approximate Gross Internal Area
79.4 sq m / 855 sq ft



Ground Floor



First Floor

Illustration for identification purposes only, measurements are approximate, not to scale.
FloorplansUsketch.com © 2014 (ID 138723)

OLIVERS TOWN

