

OLIVERS TOWN



LET

Lower Merton Rise, Primrose Hill NW3

£575PW
£2PCM



BEDROOMS

3



RECEPTION

1



BATHROOM

1

OLIVERS TOWN



A bright and spacious three bedroom apartment located within easy reach of both Chalk Farm and Swiss Cottage underground stations. The generously proportioned accommodation comprises a bright reception room with floor to ceiling windows, modern kitchen, three double bedrooms, bathroom and additional WC. Ideally positioned for access to Chalk Farm and Camden and also just a short walk to the picturesque Primrose Hill village.

REF. 46959

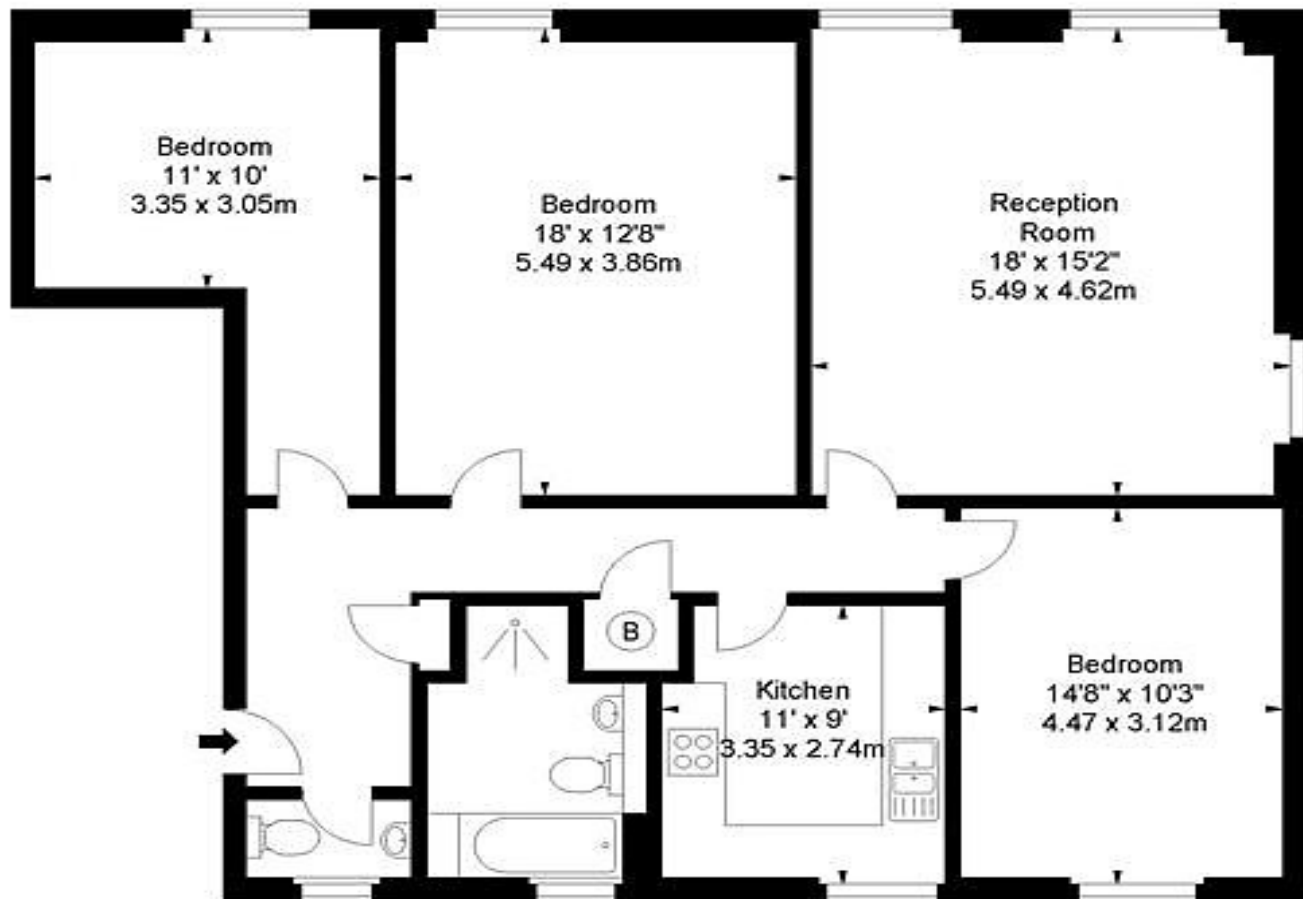
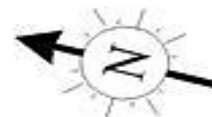
OLIVERS TOWN



OLIVERS TOWN

Lower Merton Rise, NW3

Approx. Gross Internal Area *
1138 Ft² - 105.72 M²



First Floor

Every attempt has been made to ensure the accuracy of this floor plan however, measurements are approximate and for illustration purposes only. Measured in accordance with the RICS code of measuring practice. Not to scale

© Inside Photography Ltd.

Tel 07850 620 122 , 0207 263 2188

www.ipinteriors.co.uk

OLIVERS TOWN

