

OLIVERS TOWN



LET

Prince of Wales Road, Kentish Town NW5

£625PW
£2PCM



BEDROOMS

2



RECEPTION

1



BATHROOMS

2



GARDEN
ROOF TERRACE



PARKING

OLIVERS TOWN



A fabulous two bedroom apartment arranged over the sixth floor of an individual, sophisticated development that blends the finest finishes and aesthetics. The well planned accommodation (circa 968 square feet) briefly comprises entrance hallway, stunning open plan kitchen/reception room with access to a huge terrace which stretches round the apartment, two double bedrooms and two modern bathrooms (one en-suite). Beautifully finished throughout, with 'top of the range' fittings, floor to ceiling windows, fantastic views, lift access and a concierge service, this superb development is ideally placed having the vibrant nightlife of Camden and Kentish Town on your doorstep, along with the more relaxed charms of Primrose Hill and Hampstead Village, with their unrivalled green spaces. With the development's superb transport links, The City, West End and East London are also just moments away. Secure underground parking is available in the basement on request.

REF. 40361

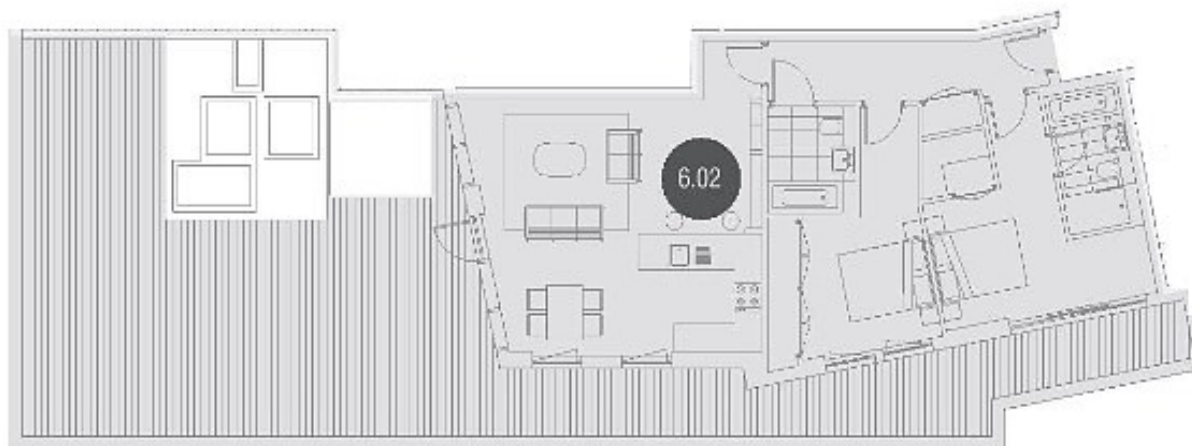
OLIVERS TOWN



OLIVERS TOWN



OLIVERS TOWN



Unit Number	Kitchen/Living/Dining Room (m)	Bedroom 1 (m)	Bedroom 2 (m)	Bedroom 3 (m)	Terrace/s (sq m)	Total (sq m)	Total (sq ft)
6.02	6.8 x 6.9	4.8 x 4.8	3.3 x 2.9	-	87.0	90.0	968.0

Floor plans and dimensions are taken from architectural drawings and could vary during construction. They are provided for guidance only and are not to scale. Total Areas provided as gross internal and external areas under the RICS measuring practice. Layouts are indicated only and subject to change.

Due to the shape of some rooms, all room measurements are approximate and the original length and width of each room have been used.

OLIVERS TOWN



OLIVERS TOWN

NOTES

Tenure:
Lease Length:
Service Charge:

Ground Rent:
Council Tax:
Borough of:



Disclaimer: Olivers Town have prepared these property particulars as a general guide to a broad description of the property. They are not intended to constitute part of an offer or contract. All photographs, measurements, floor plans and distances referred to are given as a guide only. The copyright of all details, photographs and floor plans remain exclusive to Olivers Town.